



Cable ID: P8-006-15-21A 1

Test Limit: TIA Cat 5e Channel

Limits Version: V7.6

Date / Time: 05/23/2024 11:39:41 AM

Operator: DANIEL SASAKI

Headroom 19.2 dB (NEXT 1,2-3,6)

Cable Type: Cat 5e U/UTP

NVP: 69.0%

Main: Versiv

S/N: 19270428

Software Version: V6.7 Build 1

Adapter: DSX-5000 (DSX-CHA004)

S/N: 4731741

Test Summary: PASS

Remote: Versiv

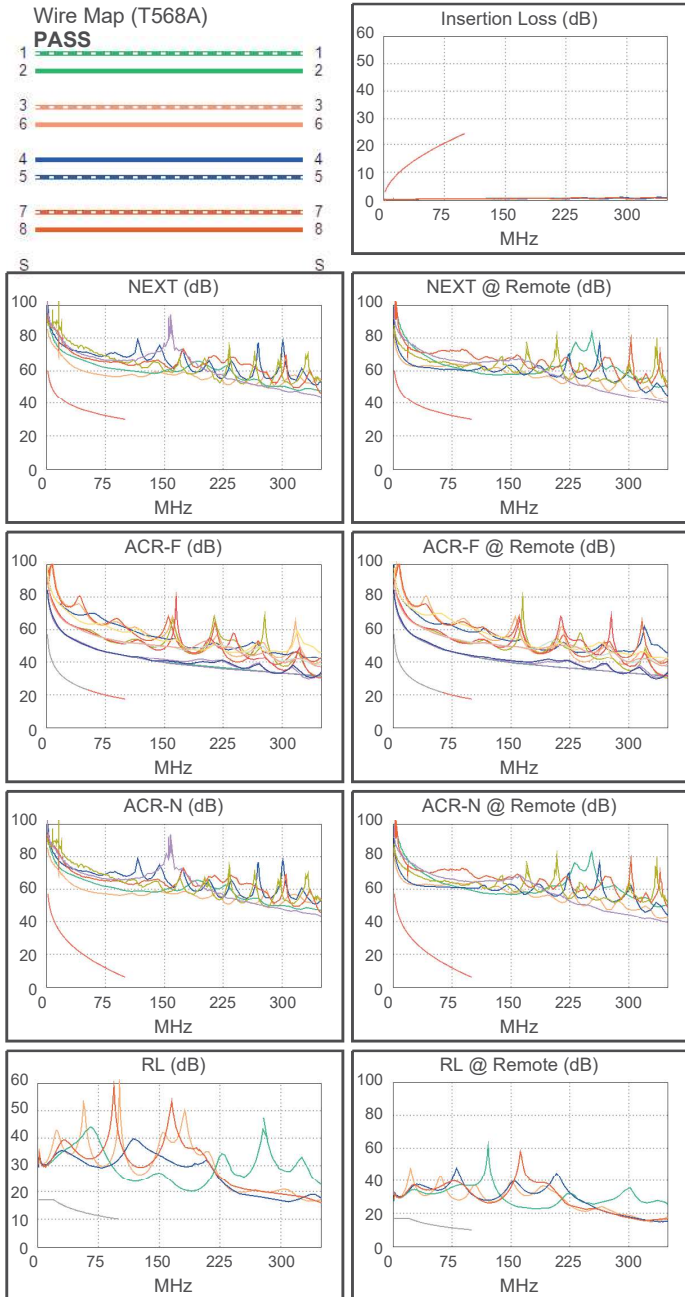
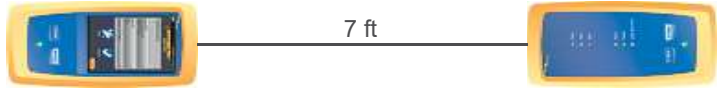
S/N: 19290091

Software Version: V6.7 Build 1

Adapter: DSX-5000R (DSX-CHA004)

S/N: 4731095

Length (ft), Limit 328	[Pair 1,2]	7
Prop. Delay (ns), Limit 555	[Pair 3,6]	10
Delay Skew (ns), Limit 50	[Pair 1,2]	0
Resistance (ohms)	[Pair 7,8]	0.37
Insertion Loss Margin (dB)	[Pair 1,2]	23.6
Frequency (MHz)	[Pair 1,2]	100.0
Limit (dB)	[Pair 1,2]	24.0



Worst Case Margin Worst Case Value

PASS	MAIN	SR	MAIN	SR
Worst Pair	1,2-3,6	1,2-3,6	1,2-3,6	1,2-4,5
NEXT (dB)	24.2	19.2	25.8	29.3
Freq. (MHz)	48.5	1.9	91.3	99.3
Limit (dB)	35.5	58.9	30.8	30.1
Worst Pair	3,6	1,2	1,2	1,2
PS NEXT (dB)	25.6	20.9	27.4	28.9
Freq. (MHz)	1.6	15.5	94.0	99.0
Limit (dB)	56.9	40.8	27.5	27.2

PASS	MAIN	SR	MAIN	SR
Worst Pair	4,5-1,2	1,2-4,5	4,5-1,2	1,2-4,5
ACR-F (dB)	25.7	25.7	25.8	25.8
Freq. (MHz)	99.3	99.3	100.0	100.0
Limit (dB)	17.5	17.5	17.4	17.4
Worst Pair	4,5	4,5	4,5	4,5
PS ACR-F (dB)	28.1	27.6	28.1	27.7
Freq. (MHz)	100.0	99.3	100.0	100.0
Limit (dB)	14.4	14.5	14.4	14.4

N/A	MAIN	SR	MAIN	SR
Worst Pair	1,2-3,6	1,2-3,6	1,2-3,6	1,2-4,5
ACR-N (dB)	27.1	22.2	48.3	52.8
Freq. (MHz)	1.6	1.9	91.3	99.3
Limit (dB)	56.9	55.8	7.9	6.2
Worst Pair	3,6	1,2	1,2	1,2
PS ACR-N (dB)	28.5	24.2	50.2	52.4
Freq. (MHz)	1.6	1.9	94.0	99.0
Limit (dB)	53.9	52.8	4.3	3.3

N/A	MAIN	SR	MAIN	SR
Worst Pair	4,5	3,6	3,6	3,6
RL (dB)	12.2	10.2	16.8	10.2
Freq. (MHz)	1.0	1.0	100.0	1.0
Limit (dB)	17.0	17.0	10.0	17.0

Compliant Network Standards:
 10BASE-T 100BASE-TX 100BASE-T4
 1000BASE-T 2.5GBASE-T ATM-25
 ATM-51 ATM-155 100VG-AnyLan
 TR-4 TR-16 Active TR-16 Passive



Cable ID: P8-006-15-21A 2

Test Limit: TIA Cat 5e Channel

Limits Version: V7.6

Date / Time: 05/23/2024 11:43:39 AM

Operator: DANIEL SASAKI

Headroom 19.3 dB (NEXT 1,2-3,6)

Cable Type: Cat 5e U/UTP

NVP: 69.0%

Main: Versiv

S/N: 19270428

Software Version: V6.7 Build 1

Adapter: DSX-5000 (DSX-CHA004)

S/N: 4731741

Test Summary: PASS

Remote: Versiv

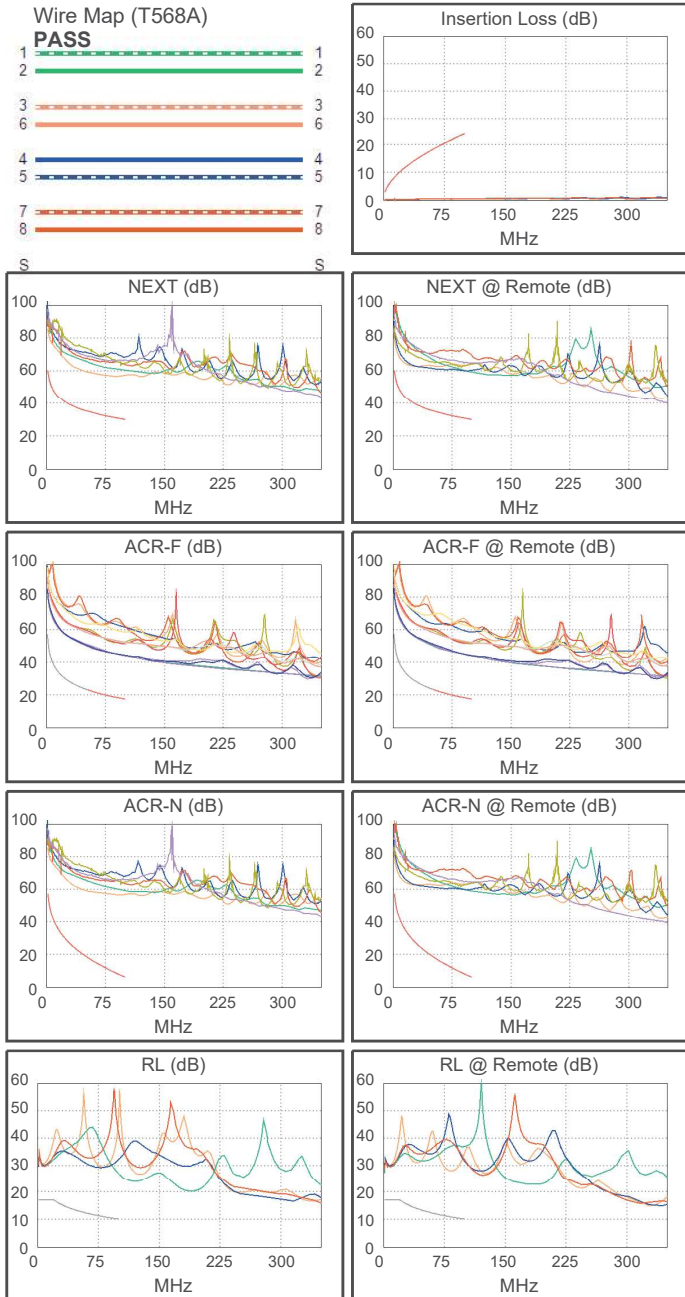
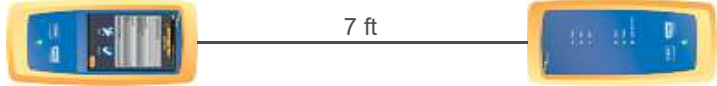
S/N: 19290091

Software Version: V6.7 Build 1

Adapter: DSX-5000R (DSX-CHA004)

S/N: 4731095

Length (ft), Limit 328	[Pair 1,2]	7
Prop. Delay (ns), Limit 555	[Pair 3,6]	10
Delay Skew (ns), Limit 50	[Pair 1,2]	0
Resistance (ohms)	[Pair 7,8]	0.37
Insertion Loss Margin (dB)	[Pair 1,2]	23.6
Frequency (MHz)	[Pair 1,2]	100.0
Limit (dB)	[Pair 1,2]	24.0



Worst Case Margin Worst Case Value

PASS	MAIN	SR	MAIN	SR
Worst Pair	1,2-3,6	1,2-3,6	1,2-3,6	1,2-4,5
NEXT (dB)	24.2	19.3	25.8	29.2
Freq. (MHz)	45.8	1.8	90.8	99.3
Limit (dB)	35.9	59.4	30.8	30.1
Worst Pair	3,6	1,2	1,2	1,2
PS NEXT (dB)	25.6	20.9	27.4	28.6
Freq. (MHz)	1.0	15.5	95.0	96.3
Limit (dB)	57.0	40.8	27.5	27.4

PASS	MAIN	SR	MAIN	SR
Worst Pair	4,5-1,2	1,2-4,5	4,5-1,2	1,2-4,5
ACR-F (dB)	25.7	25.7	25.7	25.7
Freq. (MHz)	100.0	100.0	100.0	100.0
Limit (dB)	17.4	17.4	17.4	17.4
Worst Pair	4,5	4,5	4,5	4,5
PS ACR-F (dB)	28.0	27.6	28.1	27.6
Freq. (MHz)	98.3	100.0	100.0	100.0
Limit (dB)	14.6	14.4	14.4	14.4

N/A	MAIN	SR	MAIN	SR
Worst Pair	1,2-3,6	1,2-3,6	1,2-3,6	1,2-4,5
ACR-N (dB)	27.4	22.2	48.2	52.7
Freq. (MHz)	1.5	1.8	90.8	99.3
Limit (dB)	57.0	56.4	8.0	6.2
Worst Pair	3,6	1,2	1,2	1,2
PS ACR-N (dB)	28.6	24.2	50.4	51.8
Freq. (MHz)	1.0	1.8	95.0	96.3
Limit (dB)	54.0	53.4	4.1	3.8

N/A	MAIN	SR	MAIN	SR
Worst Pair	4,5	3,6	3,6	3,6
RL (dB)	12.4	10.1	16.8	10.1
Freq. (MHz)	1.0	1.0	100.0	1.0
Limit (dB)	17.0	17.0	10.0	17.0

Compliant Network Standards:
 10BASE-T 100BASE-TX 100BASE-T4
 1000BASE-T 2.5GBASE-T ATM-25
 ATM-51 ATM-155 100VG-AnyLan
 TR-4 TR-16 Active TR-16 Passive